



Illinois
Native
Plant
Society

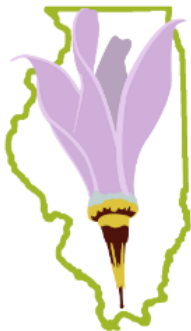
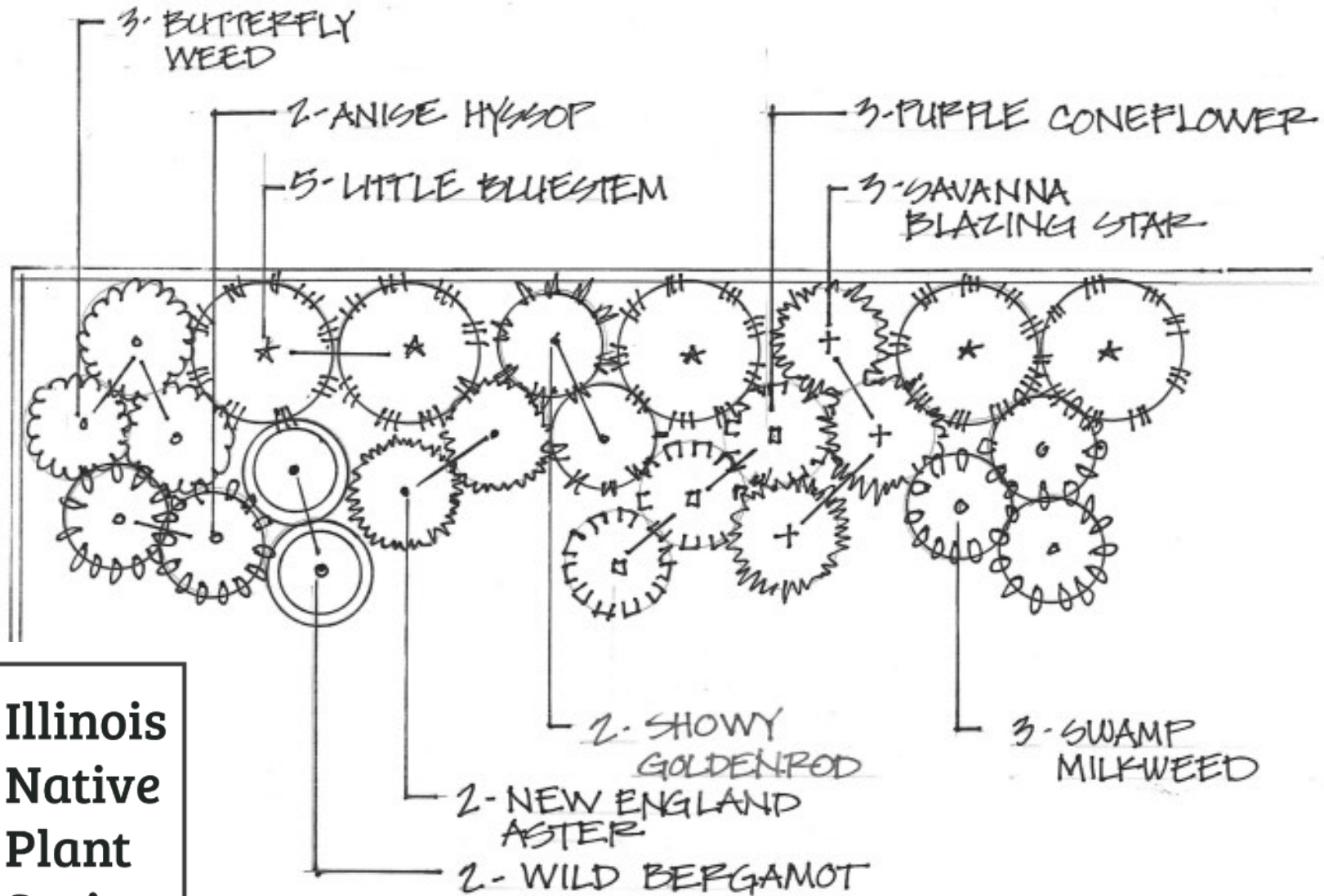
CENTRAL CHAPTER

Support the monarch butterfly with this colorful garden kit featuring some of the butterfly's favorite nectar plants as well as host plants for the caterpillars! Ideal for a site with full sun and good drainage.

MONARCH MEDLEY GARDEN KIT

# of Plants	Scientific Name	Common Name	Description	Growing Conditions	Comment
Mid Season Bloomers					
2	<i>Agastache foeniculum</i>	Anise Hyssop	2-4', Lavender to purple flowers	Dry to moist, Sun to part shade	Butterfly, bee.
3	<i>Asclepias incarnata</i>	Swamp Milkweed	4-5', Pink flowers	Wet to moist, Sun	Monarch larval food. Butterfly, hummingbird, bee
3	<i>Asclepias tuberosa</i>	Butterfly Milkweed	18-30", Showy orange flowers	Moist to dry, Sun	Monarch larval food. Butterfly, hummingbird, bee
3	<i>Echinacea purpurea</i>	Eastern Purple Coneflower	To 4', Pink flowers	Moist to dry, Sun	Silvery Checkerspot larval food. Butterfly, bee
2	<i>Monarda fistulosa</i>	Wild Bergamot	30-48", Pinkish-lavender flowers	Moist to dry, Sun to light shade	Butterfly, hummingbird, bee, skipper. Mammals avoid. Will spread
Late Bloomers					
3	<i>Liatris scariosa</i> var. <i>nieuwlandii</i>	Savanna Blazing Star	3-5', Spike of purple flower spikes	Moist to Dry, Sun to light shade	Butterfly, hummingbird, bee, skipper. Monarch favorite.
2	<i>Solidago speciosa</i>	Showy Goldenrod	3-4', Bright yellow plummy flowers	Moist to dry, Sun	Butterfly, bee. Super bloomer with lots of nectar
2	<i>Symphotrichum novae-angliae</i>	New England Aster	4-5', Pink, purple, rose, or magenta flowers	Moist to slightly dry, Sun to part sun	Silvery Checkerspot, Pearl Crescent larval food. Butterfly, bee, skipper. Clip to shorten. Monarch favorite
Grass					
5	<i>Schizachyrium scoparium</i>	Little Bluestem	To 40", Feathery seed heads	Dry, Sun	Several skippers larval food. Small songbirds eat seed. Bronze-orange in fall

MONARCH MEDLEY GARDEN KIT



Illinois
Native
Plant
Society

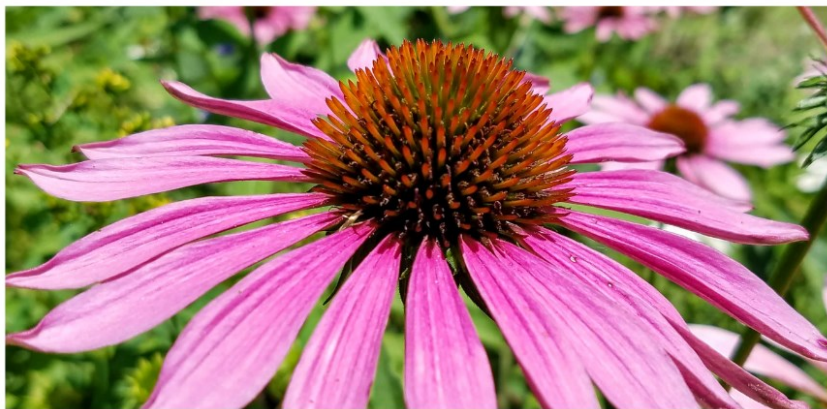
CENTRAL CHAPTER

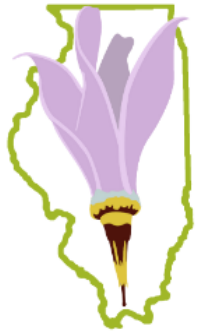
Approximately 4' x 15'



Monarch Medley

GARDEN KIT





Illinois
Native
Plant
Society

CENTRAL CHAPTER

This kit features a great variety of compact plants under 3' that will offer colorful blooms for pollinators through the entire growing season. Ideal for a site with full sun and good drainage.

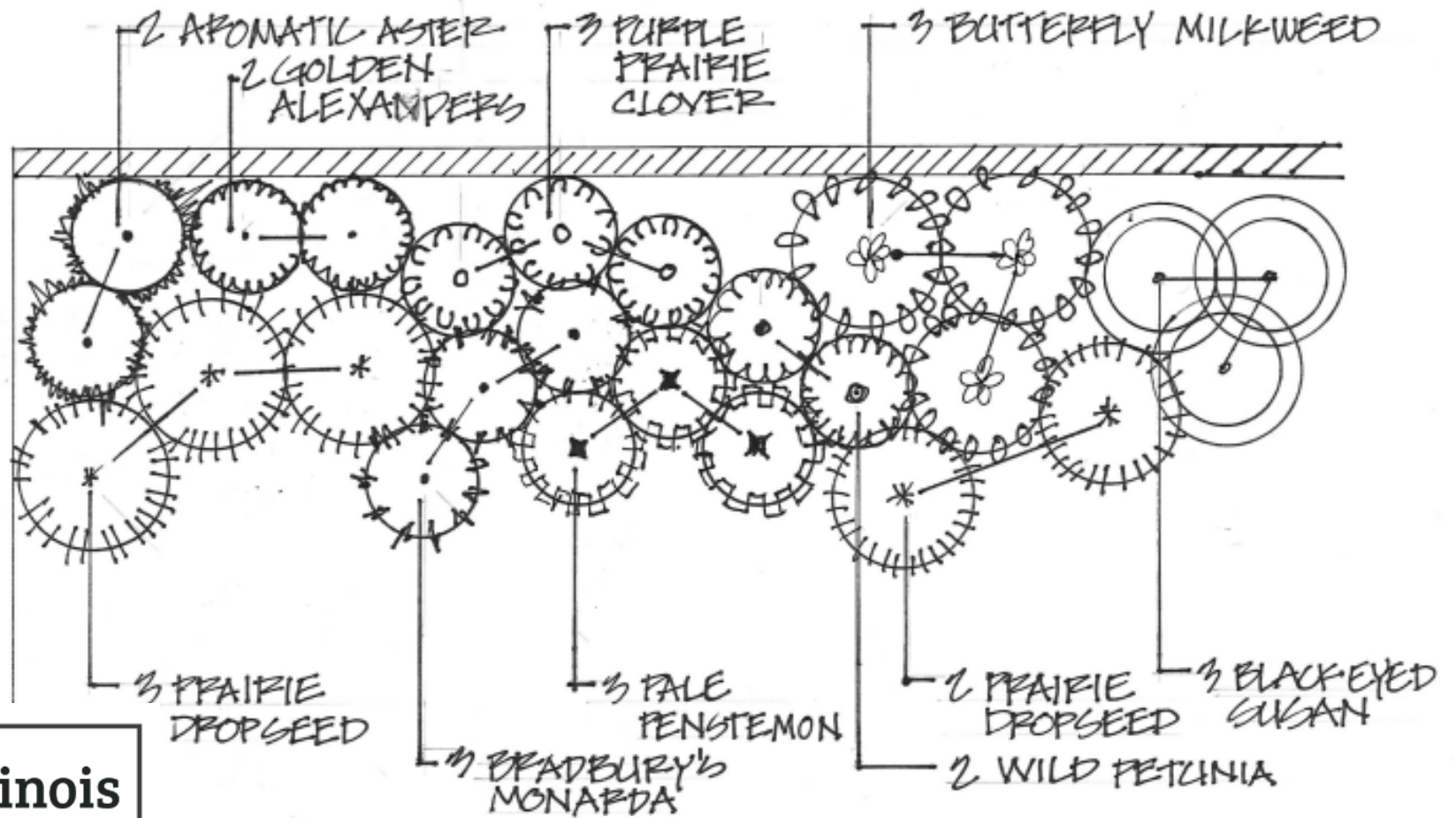
SHORT & SHOWY GARDEN KIT

# of Plants	Scientific Name	Common Name	Description	Growing Conditions	Comment
Early Bloomers					
3	<i>Monarda bradburiana</i>	Eastern Beebalm	1-2', White to pink with purple dots	Moist to dry, Sun to part shade	Butterfly, hummingbird, bee.
3	<i>Penstemon pallidus</i>	Pale Beardstongue	To 2', White to pale lavender tubular flowers	Moist to dry, Sun to part shade	Bee. Good garden plant. Most mammals avoid.
2	<i>Zizia aurea</i> *	Golden Alexanders	To 30", Yellow flowers	Moist, Sun. Shade tolerated	Eastern Black Swallowtail larval food. Bee, small butterflies.
Mid Season Bloomers					
3	<i>Asclepias tuberosa</i>	Butterfly Milkweed	18-30", Showy orange flowers	Moist to dry, Sun	Monarch larval food. Butterfly, hummingbird, bee
3	<i>Dalea purpurea</i>	Purple Prairie Clover	1-3', Purple flowers	Moist to dry, Sun	Dogface Sulfur larval food. Bee, butterfly
2	<i>Rudbeckia fulgida</i>	Orange Coneflower	To 30", Yellow petals with brown center	Moist to dry, Sun to part shade	Bee, butterfly, skipper. Excellent garden and cut flower
2	<i>Ruellia humilis</i>	Wild Petunia	12-18", Light purple flowers	Moist to dry, Sun to part shade	Bee. Common buckeye larval food.
Late Bloomers					
2	<i>Symphotrichum oblongifolium</i> **	Aromatic Aster	1-3', Blue to purple flowers	Dry, Sun	Silvery Checkerspot, Pearl Crescent larval food. Butterfly, bee, skipper. Monarch favorite.
Grass					
5	<i>Sporobolus heterolepis</i>	Prairie Dropseed	To 30", Fountain-shaped grass	Dry to moist, Full sun	Small songbirds eat seed. Showy. Buttered popcorn scented

* Reseeds readily. Deadhead if desired.

** Cut back by half before July to reduce height and encourage compact growth if desired.

SHORT & SHOWY GARDEN KIT



Illinois
Native
Plant
Society

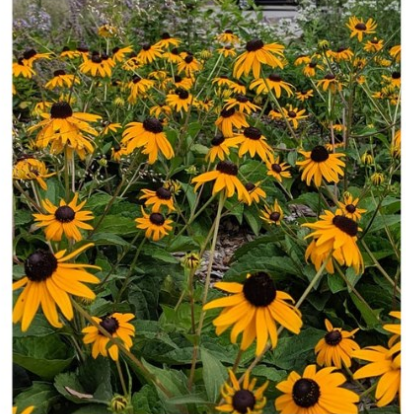
CENTRAL CHAPTER

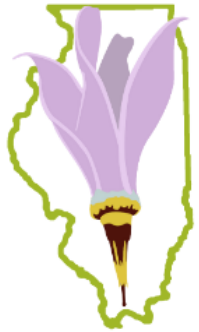
Approximately 4' x 15'



Short & Showy

GARDEN KIT





Illinois
Native
Plant
Society

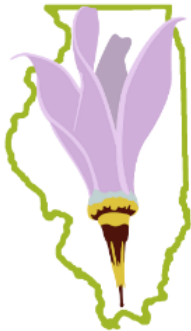
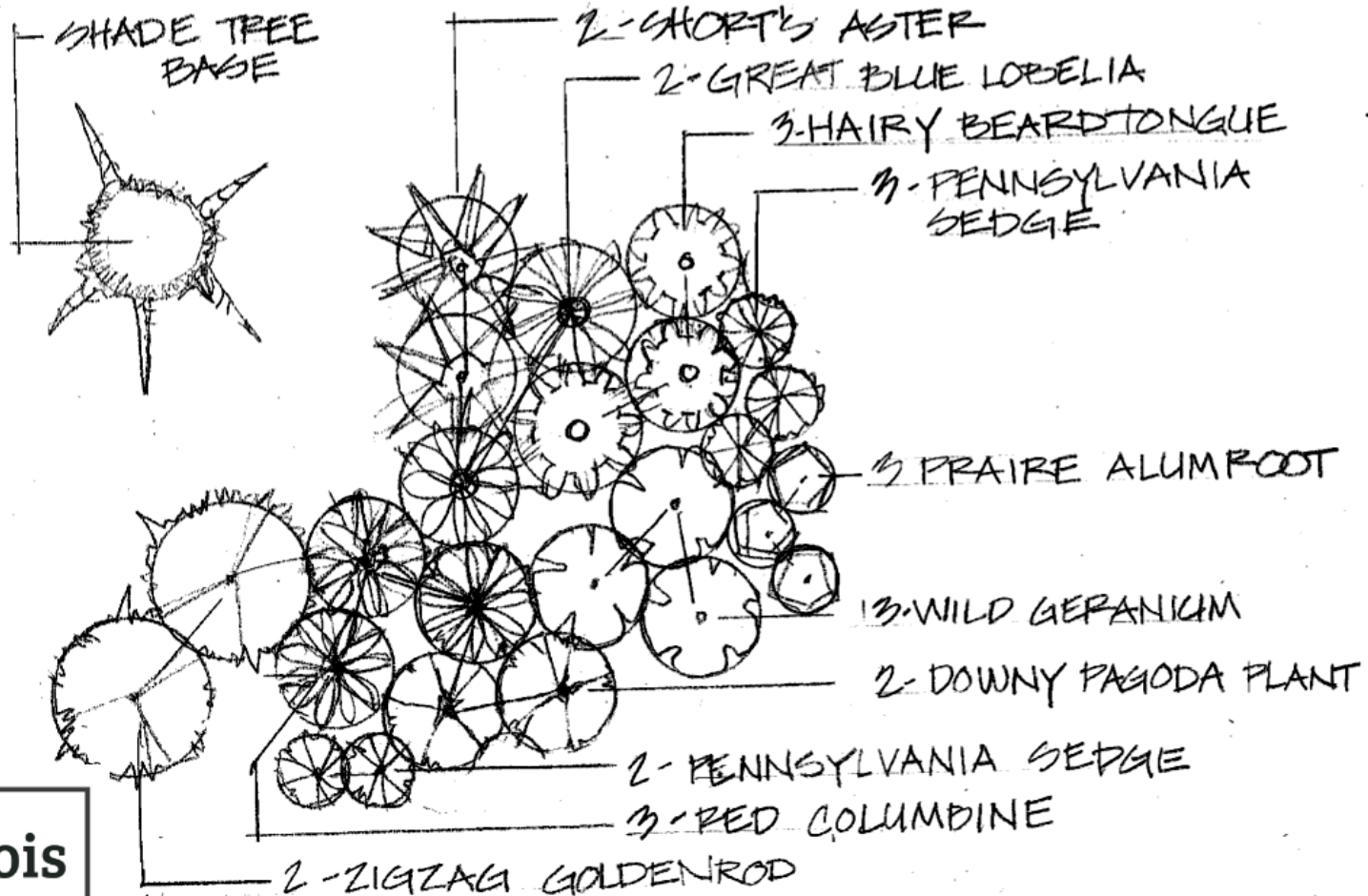
CENTRAL CHAPTER

Add life and color beneath your shade trees with this collection of plants growing up to 3'. Designed to create "soft landings" for caterpillars and other beneficial insects, these plants provide seasonal blooms while offering habitat for overwintering wildlife. Perfect for sites with part to full shade and well-drained soil.

SOFT LANDINGS SHADE KIT

# of Plants	Scientific Name	Common Name	Description	Growing Conditions	Comment
Early Bloomers					
3	<i>Geranium maculatum</i>	Wild Geranium	To 30", Purplish-pink flowers	Moist to dry. Shade	Butterfly, bee. Can form dense colonies.
3	<i>Aquilegia canadensis</i>	Red Columbine	30", Scarlet and yellow flowers	Moist to dry, Part shade to shade	Hummingbird, bee
Mid Season Bloomers					
3	<i>Heuchera richardsonii</i>	Prairie Alumroot	1-2', Greenish flowers	Moist to dry, Sun to part shade	Bee. Good rock garden plant
3	<i>Penstemon hirsutus</i>	Hairy Beardtongue	1-2', Pinkish-purple to white tubular flowers	Moist to dry, Sun to part shade	Butterfly, bee, skipper, hummingbird.
2	<i>Blephilia ciliata</i>	Downy Pagoda-Plant	12-24", Pale lavender flowers	Moist to dry, Sun to part shade	Bee, butterfly
2	<i>Lobelia siphilitica</i>	Great Blue Lobelia	1-3', Blue flower spikes	Moist. Sun to part shade	Butterfly, hummingbird, bee. Most mammals avoid
Late Bloomers					
2	<i>Solidago flexicaulis</i>	Zigzag Goldenrod	1-3', Yellow flowers	Moist well drained, Light shade	Bee, butterfly. Attractive woodland bloomer
2	<i>Symphyotrichum shortii</i>	Short's Aster	1-3', Purple flowers	Moist, Part to full shade	Butterfly plant. AKA Aster shortii, Heavy reseeder
Grass					
5	<i>Carex pensylvanica</i>	Pennsylvania Sedge	6-15", Yellowish-green inflorescence	Dry to moist, Sun to full shade	Good groundcover. Foliage semi-evergreen

SOFT LANDINGS SHADE KIT



Illinois
Native
Plant
Society

CENTRAL CHAPTER

Approximately 4' x 15'



Soft Landings Shade

GARDEN KIT

