



"...dedicated to the preservation, conservation, and study of native plants and vegetation in Illinois."

The Shooting Star NEWSLETTER

of the

Illinois Native Plant Society – Southern Chapter

Nov - Dec 2012

Bidens in FGB in Little Black Slough!

By Chris Benda: On Sunday, October 28th, 2012 a handful of people gathered in the parking lot of Wildcat Bluff to make the trek to Boss Island, to see the marigolds (*Bidens* sp.) in Full Glorious Bloom (FGB). I feared we would be too late, but I planned the hike for the same date as the previous year when I observed the marigold explosion (special thanks to Jim Waycuilis). But this year's strange weather had me wondering if the plants would be on schedule. We tromped through the freshly fallen leaves, down the hill, and across the Cache River to Boss Island. We were rewarded with a tremendous view of wildflowers in Little Black Slough, and I think the swamp was even fuller this year than last. See more photos at: <http://www.facebook.com/media/set/?set=a.236142973083523.61000.175434959154325&type=1&l=53b33684de>



Next Event:

4th Annual Holiday Dinner!

Board member Nancy Garwood and spouse Richard Thomas are hosting this year's dinner. This event is for current members only. Please see details inside!



Call for Board Member Nominations

We are nearing the end of another calendar year and it is time to ask for officer nominations. While all the current officers have been nominated for another term, we welcome additional nominations and would like to add another member to the board. Positions are president, vice-president, secretary, treasurer, and 2-3 at-large members. If you would like to nominate someone (or yourself) for one of these positions, please write the board at PO Box 271, Carbondale, IL 62901 or email southernillinoisplants@gmail.com. Elections will be held next month.

INPS 2012 CALENDAR

Upcoming 2012 Events:	<u>SPEAKER</u>	<u>PROGRAM</u>	<u>LOCATION</u>
December 4th	2012 INPS Southern Chapter Board Meeting	SIU campus, room 453	
December 8th	2012 Holiday Dinner @ 2:00pm	Garwood/Thomas residence	

Please look for more programming in upcoming newsletters for 2013

Past 2012 Events:

January 17th	- Damon Lesmeister	<i>Conflicts in Conservation</i>	CTH
February 4th	- Josh Nickelson	<i>Winter Tree ID</i>	SIU campus, Ag bldg.
February 21st	- Dr. Doug Tallamy	<i>Replay slideshow talk from Feb 2011</i>	CTH
March 23rd	- Chris Benda	<i>Top 10 Places in Southern Illinois</i>	CTH
March 24th	- Chris Benda	<i>Degognia Canyon</i>	Degognia, IL
April 22nd	- INPS So. Chapter	<i>2012 Spring Social</i>	Goreville, IL
May 15th	- ISST - Bruce/Kevin	<i>Coordinated Control of Invasives</i>	CTH
June 2nd-3rd	- Mike Murphy	<i>Sedge ID Workshop I</i>	SUIC
June 19th	- Shawnee NF	<i>Fire and Land Management</i>	CTH
July 17th	- Chris Benda	<i>The Wonders of Camp Ondessonk</i>	CTH
August 3rd & 4th	- Dr. Gordon Tucker	<i>Sedge ID Workshop II</i>	SIUC
September 18th	- Dr. Andrew West	<i>The Sand Hills of Nebraska</i>	CTH
October 6th	- Clifftop	<i>Hike to Mill Creek</i>	Rockwood, IL
October 16th	- Dr. Nancy Garwood	<i>Ranunculaceae Family</i>	CTH
October 28th	- Chris Benda	<i>Hike to Boss Island</i>	Vienna, IL

CTH = Carbondale Township Hall, 217 Main St. Carbondale, Illinois.

Special thanks to **Dr. Andrew West** for his presentation about **The Great Desert of Drifting Sand: The Nebraska Sandhills** at our September meeting and to **Dr. Nancy Garwood** for presenting **The Ranunculaceae Family in Illinois: A Global Perspective** at the October meeting!

Related December Events

➤ **Wednesday, December 5th:** The Natural Areas Association student chapter at SIU will have a meeting at 4:00pm in LSII room 423. Jody Shimp from the Heritage Division at the Illinois Department of Natural Resources (IDNR) will speak about various IDNR opportunities for students. Also, there are still plenty of NAA t-shirts to purchase, just in time for Christmas. If you are interested please bring \$12 to the meeting.

➤ **Saturday, December 15th:** The Art of Flintknapping (arrowhead making) featuring Larry Kinsella at Touch of Nature Upper 40 cabin from 10:00am to 4:30pm. Cost is \$45. Contact Touch of Nature at 618-453-1121 or tonec@siu.edu.

Please visit the Beautiful Southern Illinois calendar at <http://www.beautifulsouthernillinois.org/events/calendar.htm>

In Blown-Down Forest, a Story of Survival

To preserve forest health, the best management decision may be to do nothing



National Science Foundation
WHERE DISCOVERIES BEGIN

A study by Harvard University researchers, supported by the National Science Foundation (NSF) and published in the journal *Ecology*, yields a surprising result: when it comes to the health of forests, native plants and wildlife, the best management decision may be to do nothing. More at: http://www.nsf.gov/news/news_summ.jsp?cntn_id=125744&WT.mc_id=USNSF_51&WT.mc_ev=click



INPS DECEMBER PROGRAM



INPS invites members and their families to join us for our annual holiday dinner.

2012 INPS Holiday Dinner

Saturday, December 8, 2012 from 2:00 – 5:00pm

Nancy Garwood, Southern Chapter INPS board member, and Richard Thomas would like to open their home in Makanda for our annual holiday dinner. Dinner will begin at 2pm. Please join us for the food and stay for the fellowship. A main dish will be provided for carnivores/omnivores (likely a slow-cooked ham) and herbivores (a savory bean soup, which may also be enjoyed by omnivores). The remainder of the menu is potluck-style, so please bring your favorite dish to share. There will be some non-alcoholic refreshments provided, but feel free to bring your own [adult] beverages.

Directions to Garwood-Thomas home (70 Clay Creek Road, Makanda Township):

From the Carbondale and the north: Take US 51 south to Old US 51, turning right (west) onto Old US 51 at the light at the intersection to Unity Point School (east) and the Makanda fire station (west)

From Anna and the south: Take US 51 north to Old US 51, turning left (west) onto Old US 51 at the intersection to Makanda (east), just north of the yellow smiley water tower

From Old US 51:

Turn West on McGuire Road (follow signs to Rowan Cemetery)

Turn South (left) at the first road intersection onto Rowan Road

Turn East (left) at the end of Rowan Road, onto Clay Creek Road

Turn South (right) onto the long driveway west (right) of a row of tall white pines

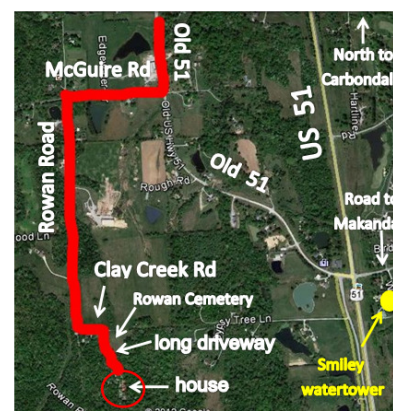
(Rowan Cemetery is on the east side of the white pines),

the house and garage are at the end

(you will probably see the red roof first)

Please park along the length of the driveway, leaving enough room in front of the garage for others to turn around and leave at the end.

Call Nancy if you have trouble, 618-214-5760.



INPS Southern Chapter Board Meeting

We encourage members to participate in the last board meeting of the year. There will be a board meeting for southern chapter of the Illinois Native Plant Society on **December 4th, from 5:00pm-6:30pm in room 453 of the Life Sciences II building at SIUC.** Parking in the Lawson lot is free. We will be discussing programming for 2013 and developing a timeline for creating a new publication about botanizing in southern Illinois, made possible by a grant from the Wildlife Preservation Fund distributed by the Illinois Department of Natural Resources.



Call for Member Contributed Content

We encourage members to contribute content for our newsletters, The Shooting Star and The Harbinger. There is never too much information to choose from. We are dedicated to bringing you the most interesting and pertinent newsletter relating to plants and the ecology of Illinois and beyond. We request articles written by our members, as well as photographs of plants and natural areas, links to online articles, flyers about upcoming events, etc. Send to southernillinoisplants@gmail.com or call Chris at 217-417-4145 and leave a message.



New online photo album: The Ferns of Southern Illinois

There is a huge diversity of ferns in the southern portion of Illinois, around 45 species in fact. A large number of these species are available in a photo album that has been created on our facebook page. See the photo album at

<http://www.facebook.com/media/set/?set=a.482265385137946.107879.175434959154325&type=1&l=60c4f82899>





Recent INPS Programs



September Program – Dr. Andrew West The Great Desert of Drifting Sand: The Nebraska Sandhills

Dr. Andrew West, longtime INPS member and contributor, and proprietor of Ozark Koala Ecosystem Services in Marion, Illinois, gave a presentation titled The Great Desert of Drifting Sand: The Nebraska Sandhills. Dr. West assisted his daughter Natalie who was conducting research relating to her doctoral degree at The University of Nebraska at Lincoln. The vast grasslands of the Nebraska Sandhills are an interesting feature in that they have been homesteaded by only a few determined families. The weather is harsh and the sand is always shifting so the inhabitants know that their connection to the land is the only thing that will sustain them into the future. This was evident in the way they managed their properties and in the vegetative data collected by Dr. West and his daughter. Replicating a study done years ago in the sandhills, Natalie West found that species diversity actually increased in the grazed portion if the study versus the non-grazed portion owned by The Nature Conservancy.

This area is also relevant as it would be the terminus for the proposed oil pipeline. The Keystone XL pipeline is a large project to move crude oil from the oil sands in Canada to oil refineries in the United States. Thanks to Dr. West for another excellent program!

Vote to fund the IDNR!

Please write to your state senator today to ask them to support SB1566, a bill that will fund the Illinois Department of Natural Resources (IDNR). As you may know, funding for the IDNR has been drastically reduced in the last 8 years. IDNR plays a critical role in protecting our natural resources including safeguarding the public water supply and wildlife, running our state parks, and performing many other vital functions that protect our environment.

Last May, the Illinois Senate failed to pass a bill that would fund the Illinois Department of Natural Resources. This bill received 33 votes - a majority of the Illinois Senate, but the bill needed a supermajority of 36 votes to pass because it was called too late. Veto session runs from November 27-29 and December 4-6. This bill has another chance to pass the Illinois Senate.

Please remind your legislators to vote YES on this bill. Click here to write your state senator a letter urging them to support SB1566 by visiting this website http://action.ilenviro.org/p/dia/action/public/?action_KEY=8936



October Program – Dr. Nancy Garwood Southern Illinois *Ranunculaceae* (The Buttercup Family) in a Global Perspective

Dr. Nancy Garwood, board member for the southern chapter of INPS and research professor in tropical botany at SIUC, gave a presentation titled, Southern Illinois *Ranunculaceae* (The Buttercup Family) in a Global Perspective. Dr. Garwood led the audience on a tour of the complex evolutionary history and incredible morphological diversity within the *Ranunculaceae* family, which is very well represented in the native flora of southern Illinois. It is estimated that there are 40 to 65 genera and 1500 to 2525 species worldwide, 23 genera and 284 species in North America, and 13 genera and 36 species in southern Illinois. There are five subfamilies in *Ranunculaceae* but one is only from Japan. The earliest common ancestor of these subfamilies dates back to 125 million years ago. While the common ancestor is not known, it is thought that such a plant might look similar to *Leefructus mirus*, a fossil plant recently identified from China, which dates back to the early Cretaceous, see photo at <http://newsinfo.iu.edu/asset/page/normal/11392.html>. Of the five subfamilies, the two largest, *Thalictrioideae* (9 genera and 420 species) and *Ranunculoideae* (46 genera and 2025 species), are represented by several species found in Illinois. The third and last subfamily found in Illinois is *Hydrastidoideae*, represented by only one species - goldenseal (*Hydrastis canadense*) - listed as threatened, endangered, or vulnerable in 12 other states. There are at least three introduced species in S. Illinois, including sweet autumn virgins bower (*Clematis terniflora*), small flower buttercup (*Ranunculus abortivus*), and rocket larkspur (*Consolida ajacis*).

The *Ranunculaceae* family is fascinating to study because of the myriad diverse forms and life histories of its species. Plants may be herbs, shrubs or trees, or herbaceous or woody vines. Flowers may have radial or bilateral symmetry; and often, the showy part of the flower is formed from the sepals instead of the petals. Plants may be dependent upon insects, birds, or wind for pollination, or they may self-pollinate, depending upon the species. In some species, petals form long spurs with nectaries to attract long-tongued pollinators, such as bees, moths or hummingbirds. Dr. Garwood introduced some of the genera found in S. Illinois and one or a few representative species. Horticulturalists may be familiar with some cultivated genera in Illinois: pheasant's eye (*Adonis vernalis*), winter aconite (*Eranthis hyemalis*), love-in-a-mist (*Nigella damascena*), and green hellebore (*Helleborus viridis*).

8th Annual Southern Illinois Alternative Gift Fair



**December 2, 2012
2 – 5 p.m.**

Do your holiday shopping!

Have Fun!

And save the world!

Live Holiday Music!

with Candy Davis, UFC, and more!

**Admission: One non-perishable food
item for Margie's Basket (to benefit
Good Samaritan Ministries)**

Fun Activities for Kids!

Silent Auction!

Fair Trade Coffee and Chocolate!

**Organizations offering
Alternative Gifts include:**

The Science Center

H Group (formerly SIRSS)

Diaper Bank of Southern Illinois

Free Again

Marion Medical Mission

Friends of Giant City State Park

Habitat for Humanity of Union-Jackson

Countries

Boys and Girls Club of Carbondale

Art of Living

Rainbow Cafe

Friends of the Cache-

Good Samaritan Ministries

Heller International

Peace Coalition of SI

Keep Carbondale Beautiful

For Kids Sake

Humane Society of Southern Illinois

Sierra Club-Shawnee Group

Women's Center

Zambian AIDS Partnership-CUF

Gaia House Interfaith Center

at the Carbondale Unitarian Fellowship

105 North Parrish Lane

Carbondale, IL

For more info, call Jess at 514-1102, or e-mail Mary at maryinbancry@yahoo.com

Visit us on Facebook!

Cache River Wetlands Holiday Open House

*You are invited to celebrate the
holiday season with us. There will be lots of good
food and cheer.*

Cypress Creek National Wildlife Refuge

Shawnee College Rustic Campus

Building D

0137 Rustic Campus Drive, Ullin, IL 62992

Phone: 618.634.2231

Thursday, December 6, 2012

11:00 am – 3:00 pm



If you wish, please feel free to bring a dish.

*Sponsored by the Friends of the Cache River Watershed, Cypress Creek
National Wildlife Refuge, The Nature Conservancy and Illinois Depart-
ment of Natural Resources*

How to Restore Native Grasslands in the Interior Pacific Northwest, U.S.



Weed scientists in Oregon have found that the timing of herbicide application along with reseeding of native grasses offers the best recipe for restoring native grasslands while controlling invasive weeds. Grasslands are a valuable resource for ecosystems, providing soil conservation, food and fiber production, and wildlife habitat. When threatened by invading exotic species, the quality and quantity of forage for wildlife can be reduced, fire frequencies can be altered, soil moisture and nutrients can be depleted, and the costs of land management can increase. Read more at: <http://www.sciencedaily.com/releases/2012/10/121004150641.htm>

From The New York Times: Invasive Grasses as Biofuel? Scientists Protest

More than 200 scientists from across the country have sent a letter to the Obama administration urging the Environmental Protection Agency to reconsider a rule that would allow two invasive grasses to qualify as advanced biofuel feedstock under the nation's renewable fuel standard. *Pennisetum purpureum*, known as napiergrass or elephant grass, is of African origin but has been introduced to many tropical areas around the world, where it multiplies rapidly. *Arundo donax*, or giant reed, is native to India and is considered particularly fearsome: it ranks as one of the world's 100 worst invasive species. **(note from the board: the INPS signed onto this letter)**

Read more at: <http://green.blogs.nytimes.com/2012/10/23/invasive-grasses-as-biofuel-scientists-protest/>



What to look for this month:

This time of year you can find the newly emerged leaves of the puttyroot orchid, also called the Adam and Eve orchid (*Aplectrum hyemale*). This species carries out photosynthesis in the winter, when the canopy leaves have fallen and light is able to reach the forest floor. Look for the flowers to appear in late April.

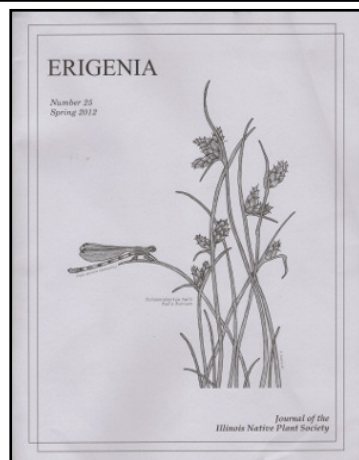


Caesar, the Orchid Chief

Turns out the early Romans were wild about orchids. A careful study of ancient artifacts in Italy has pushed back the earliest documented appearance of the showy and highly symbolic flowers in Western art from Renaissance to Roman times. In fact, the researchers say, the orchid's popularity in public art appeared to wilt with the arrival of Christianity, perhaps because of its associations with sexuality. The fanciful shapes and bright colors of orchids have long made them popular with flower fanciers, and today they support a multibillion-dollar global trade. Read more at:

<http://news.sciencemag.org/sciencenow/2012/10/caesar-the-orchid-chief.html>

Listen to the podcast (Silky Aster): When biologist Diana Bizecki Robson sits in the middle of the tallgrass prairie in a park near Winnipeg, she sees stars, the tiny, bright flowers of the western silvery aster. The prairie may seem a world away from our modern lives, but Robson shows how this endangered ecosystem's flora and fauna are intimately connected with our own well-being. Listen at <http://education.eol.org/podcast/western-silvery-aster>



Erigenia, the Journal of the Illinois Native Plant Society

Now available at <http://www.ill-inps.org/>

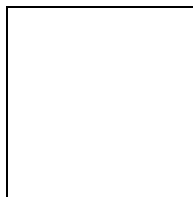
Hi Everyone! It is with great excitement that we announce that all of our Erigenia issues are now available for pdf download through the INPS website! Please use the link below for your convenience.

http://www.ill-inps.org/Erigenia_Back_Issues#

Please feel free to pass this information on!

Sincerely,
The INPS Governing Board

INPS SOUTHERN CHAPTER
P.O. Box 271
Carbondale, IL 62903-0271



southernillinoisplants@gmail.com
www.ill-inps.org



Dodecatheon frenchii –
French's Shooting Star

Board Members

President: Chris Benda
VP: Chris Evans
Secretary: Karla Gage
Treasurer: Rhonda Rothrock
At-large: Nancy Garwood
At-large: Jody Shimp

Please become a member and support this local non-profit organization dedicated to the preservation, conservation, and study of the native plants and vegetation of Illinois!!!



Join us!

- ☐ New member
☐ Renewal
☐ Address Change only

Mr./Mrs./Ms./Miss/Dr. _____
Street _____
City _____ State _____ Zip _____
Phone Number _____ Membership Year _____
Email _____

☐ Check here if you want to receive newsletters by postal mail*

Membership Categories

- ☐ Student.....\$13.00
☐ Individual.....\$20.00
☐ Family (new category).....\$30.00
☐ Institutional (nonvoting).\$20.00
☐ Supporting.....\$30.00
☐ Patron.....\$55.00
☐ Life.....\$300.00

Chapter Affiliation

- ☐ Central (Springfield)
☐ Forest Glen (Westville)
☐ Northeast (Chicago)
☒ Southern (Carbondale)
☐ Quad City (Rock Island)
☐ Irene Cull (Peoria)

PLEASE MAKE CHECKS PAYABLE TO: Illinois Native Plant Society

Mail to:

INPS Southern Chapter

P.O. Box 271

Carbondale, Illinois 62903