



# The Shooting Star **May 2021**

## Newsletter

*“Dedicated to the study, appreciation, and conservation of the native flora and natural communities in Illinois.”*

### Inside this issue:

<i>President's Message</i>	2
<i>Feature Plant of The Month</i>	2
<i>Events Calendar</i>	3
<i>Local Events &amp; Announcements</i>	4-8
<i>Invasive Species Corner</i>	9
<i>Contact Us</i>	10

## *Are My Oak Trees in Trouble? Tuesday, May 18<sup>th</sup> at 6:30 p.m. Virtual Presentation*

Oaks are a critical part of Illinois' natural heritage, but have been under attack lately. Join Tricia Bethke, Forest Pest Reach Coordinator, to learn more about pests, pathogens, and diseases that threaten the health of oak trees. There will be a discussion of how to identify, monitor, and manage oak pests and diseases.

This event is free and open to the public, but registration is required.

Sign up today by visiting <https://bit.ly/3bjCcTj>.



If you are receiving a black and white newsletter by postal mail, please help lower our costs by signing up for an electronic copy in color. Send your email address to [southernillinoisplants@gmail.com](mailto:southernillinoisplants@gmail.com) to be added to our email distribution list. Also please “like” our page on facebook at [www.facebook.com/southernillinoisplants](http://www.facebook.com/southernillinoisplants).



## *Message from the Southern Chapter President*

Hello everyone and welcome to an, at least so far, unseasonably cold May. Late spring cold snaps always remind me of the first year I came to southern Illinois, 2007, and the very hard late April freeze we had that year. If you remember, that freeze happened when a lot of plants, including tree species, were in full flower and the freeze drastically reduced fruit and seed production on native plants across much of our region. White oak acorns and hickory nuts were basically non-existent that fall. Fortunately this impact was short lived. Acorns and hickory nuts came back the following year and wildlife were able to compensate and adjust.

Of course two years later, in 2009, we had the May 8<sup>th</sup> super derecho that damage thousands of acres of forests. After that, the leap day tornadoes, ice storms, droughts, heat waves, floods, etc. Even with all of these events happening over the last 14 years, nature abounds in southern Illinois. It is a testament to the resiliency of our native plants and natural communities. I also see resiliency in the prairie plants holding on in a closed in remnant glade or the eruption of native plants that follow a burn in a dry forest; all of these help me appreciate the native flora and natural communities of southern Illinois all the more.

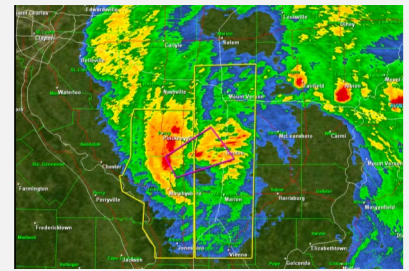


Photo courtesy, National Weather Service

I hope you continue to be involved with the Native Plant Society and participate in our programs.

~ Chris Evans

**“Even with all of the [natural disaster] events happening the last 14 years, nature abounds in southern Illinois. It is a testament to the resiliency of our native plants and natural communities.”**

<b><i>Feature Plant of the Month</i></b>	<b>Showy Orchis, <i>Galearais spectabilis</i></b>
--	---

Abundant in rich mesic uplands, this is a small, spring-flowering orchid. They are only about six inches tall, featuring two broad shiny green basal (base) leaves. They typically flower April through May with a flowering spike between to the two leaves, consisting of three to six flowers. The upper part of the flower (the hood) is purple/lavender while the lower petal is white and spurred.

Keep in mind to not remove orchids from the wild. They do not transplant well and should not be dug for use in home gardens. Is it also prohibited by law in many instances on public lands.



Photo courtesy, Chris Benda

2021



## Southern Chapter

P.O. Box 271, Carbondale IL 62901

southernillinoisplants@gmail.com

www.facebook.com/southernillinoisplants

### Calendar of Events

May 18	Tricia Bethke	Oak Pests and Diseases	Virtual
June 15	Chris Benda	Plants of Concern	Virtual
July 17	Nick Seaton	Guided Hike	Max Creek
August 17	Alice Brandon	TBD	Virtual
September	TBD	TBD	TBD
October	INPS	Workday	Pleasant Valley
Nov. 16	Lauren Pile	TBD	Virtual

CTH = Carbondale Township Hall, 217 E. Main St., Carbondale IL at 6:30 pm; TBD = To Be Determined  
For more information visit <http://www.ill-inps.org/index.php/southern-chapter>

**Did you miss our virtual 2021 Illinois Indigenous Plants Symposium? View the recorded presentations on our YouTube channel by visiting <https://bit.ly/3tz8tvW>.**

### Spring Ephemerals Quiz

Botanist Chris Benda provides a fascinating look into the world of spring ephemerals—the earliest blooming wildflowers. Take this quiz to learn about pollination and bloom periods, and to enrich your vocabulary. Stick with it and complete this quiz as it has some questions that may send you to a dictionary. But in the end, you'll be glad for this wildflower lesson because, with dinner parties soon to again become part of our lives (!), you'll have some fascinating facts to drop into the conversation. Test your knowledge by visiting <https://qz.app.do/spring-ephemeral>. Check out more nature quizzes by visiting <https://illinoisaudubon.org/naturequiz/>.



Illinois Audubon Society

### Green Earth Inc.

Check out their spring wildflower guide by visiting <https://www.greenearthinc.org/>.





## Local Events & Announcements

### Giant City State Park

#### Art in the Park

Saturday, May 22<sup>nd</sup> 1— 3pm

What better setting than outdoors to get creative and learn how to watercolor paint! Join local artist, Anne Krippenstapel, for a leisurely afternoon of creating art inspired by the many shapes and textures of leaves.

#### Which Grass is Which?

Thursday, May 27<sup>th</sup> 10— 11:30am

Join Erin Garrett with U of I Extension on a hike at Allen Pond to learn tips and tricks to help you identify cool season grasses in southern Illinois.

**Registration is required for programs; to register, call 617-457-4836.**



In order to prevent the spread of COVID 19 and to help keep program participants safe, all programs will take place outdoors and will have a limited registration of 10 or less people. Please remember to bring a mask. If social distancing of at least 6 feet is not possible, masks must be worn.

**Registration is required for all programs.** Please call the Giant City Visitors Center at 618-457-4836 for more information or to register.



All programs are free!

*Happy Hiking!*



### University of Illinois Extension Forestry

#### Horned Oak Galls

Horned oak galls are woody growths on oak twigs caused by the wasp *Callirhytis cornigera*. These are most often found on pin oaks or shingle oaks where light infestations are extremely common. Heavy infestations are usually a sign that the tree is under some other form of stress. While some insecticidal treatments are available, management is generally not needed for light infestations, but galls can be pruned out of a tree if they are deemed unsightly. Heavy infestations can be best managed by addressing the underlying cause of stress.



### New Illinois Champion Tree Pignut Hickory, *Carya glabra*

Congratulations to Christopher Benda for one of his recent Big Tree finds – Illinois' new state champion pignut hickory (*Carya glabra*)! Nestled in the Shawnee National Forest of Jackson County, Chris' new state champion measures an impressive 10.02 ft in circumference (38.3" dbh) with a total height of 91 ft with an average crown width of 82.5 ft for a total score of 232 points. Photos courtesy of Chris Benda. Please visit UI Extension Forestry's Illinois Champion Trees StoryMap for more information - [go.illinois.edu/championtrees](https://go.illinois.edu/championtrees)



## *Local Events & Announcements*



### WHICH GRASS IS WHICH?

#### Cool-Season Grass Identification Hike

Giant City State Park  
Thursday, May 27 | 10am - 11:30am

Join Erin Garrett with U of I Extension on a hike at Allen Pond to learn tips and tricks to help you identify cool-season grasses in southern Illinois.

This program is free and open to the public but space is limited and registration is required. If social distancing is not possible, face masks must be worn. For more information or to register please call 618-457-4836.

#### IDNR, Conservation Worker Seasonal Openings

<https://illinois.jobs2web.com/>

Type "Conservation Worker" into the search engine and create an account to apply.

Locations include:

- Ferne Clyffe State Park
- Cache River State Natural Area
- Tunnel Hill State Trail





**MAY 17 @ NOON**

# AN INTRODUCTION TO THE ILLINOIS CLIMATE ASSESSMENT

The climate in Illinois is changing rapidly.

Illinois is already warmer and wetter than it was a century ago and climate change will continue to drive rapid changes across the state.

A new report from The Nature Conservancy—the first-ever, comprehensive climate assessment for Illinois—details these changes and more.

Join us to hear from leading climate experts and Illinois scientists about the results of the new report. Learn how predicted changes could affect Illinois, including impacts to water resources, agriculture, public health, and natural ecosystems.

**FOR WEBINAR DETAILS, VISIT**

**[GO.ILLINOIS.EDU/IL-CLIMATE-ASSESSMENT-INTRO](https://go.illinois.edu/il-climate-assessment-intro)**



UNIVERSITY OF  
**ILLINOIS**  
URBANA-CHAMPAIGN

The Nature  
Conservancy





## Join the Illinois Forestry Association for a Forest Management Field Tour of Touch of Nature Environmental Center!

**Touch of Nature Environmental Center**  
**Saturday, May 22nd from 10:00 am - 11:30 pm**

*Join the Illinois Forestry Association for a field tour to learn more about the forest management techniques that are being conducted today to keep Illinois forests healthy and productive!*

### Program Schedule:

**10:00 am - 10:30 am**

**Dr. Charles Ruffner - Forest Management Tour**

Learn about the forest management techniques being done at Touch of Nature Environmental Center, such as forest thinning and prescribed fire. Dr. Ruffner is a forestry professor at the Southern Illinois University Carbondale.

**10:35 am - 11:00 pm**

**Roger Smith - Invasive Species Control Tour**

Learn about the invasive plant control efforts being made at Touch of Nature. This tour will show the benefits of using a forestry mulcher to control woody invasives as well as the follow-up techniques required to successfully eradicate invasives. Roger Smith is a consulting forester/arborist.

**11:05 am - 11:30 am**

**Zach DeVillez and Chris Evans - Emerald Ash Borer Discussion**

Learn how to identify ash trees impacted by emerald ash borer. Many ash trees in Southern Illinois are showing symptoms of decline, resulting in widespread mortality. Chris Evans and Zach DeVillez have research in Southern Illinois to trap and monitor for EAB through the University of Illinois Extension Forestry.

**Note: We can only accept 50 attendees for this field tour**

**Register Now At: <https://www.ilforestry.org/event-4300714>**

**Attendees should make sure to bring suitable attire to hike in. Face masks are optional but we will ask that attendees prepare to adhere to proper social distancing.**

**Location: 1206 Touch of Nature Road, Makanda, IL (Follow Signs for Freeberg Hall parking area).**





The poster features a large orange sun in the top left corner. The title "Illinois Extension SUMMER TRASH BLASTS" is prominently displayed in the upper center. Below the title, the dates "FRIDAYS, 9-11AM" are written in red. To the left of the dates, a dark blue box contains the text "LIMITED PARTICIPATION. WEAR A MASK. BRING YOUR OWN WORK GLOVES." in green and white. To the right of the dates, the text "ONLINE REGISTRATION REQUIRED." is in blue, followed by the URL "https://go.illinois.edu/IDNRTrashBlast" in black. A vertical strip on the left shows several black plastic trash bags. To the right of this strip are four circular icons, each containing a trash bag, corresponding to the event dates and locations: 6/4 Cache River State Natural Area, 7/9 Ferne Clyffe State Park, 8/6 Cache River State Natural Area, and 8/20 Horseshoe Lake Fish & Wildlife Area. Logos for the Illinois Department of Natural Resources, Friends of the Cache River Watershed, and the University of Illinois "I" logo are also present. At the bottom, contact information for Kim Rohling is provided, along with a disclaimer about equal opportunities.

**Illinois Extension**  
**SUMMER**  
**TRASH BLASTS**

**FRIDAYS, 9-11AM**

LIMITED PARTICIPATION.  
WEAR A MASK.  
BRING YOUR OWN  
WORK GLOVES.

ONLINE REGISTRATION REQUIRED.  
<https://go.illinois.edu/IDNRTrashBlast>

6 / 4  
Cache River  
State Natural Area

7 / 9  
Ferne Clyffe  
State Park

8 / 6  
Cache River  
State Natural Area

8 / 20  
Horseshoe Lake  
Fish & Wildlife Area

BE PART OF  
THE SOLUTION, NOT  
THE POLLUTION.

Questions? Contact Kim Rohling at [kimrohli@illinois.edu](mailto:kimrohli@illinois.edu)

University of Illinois | U.S. Department of Agriculture | Local Extension Councils Cooperating. University of Illinois Extension provides equal opportunities in programs and employment. If you need a reasonable accommodation to participate in this program, please contact your local Extension Coordinator 618-658-5321. Early requests are strongly encouraged to allow sufficient time for meeting your access needs.

University of Illinois Extension is partnering with Illinois Department of Natural Resources and Friends of the Cache River Watershed to host trash blasts in State Natural Areas, Parks, Trails, and Fish and Wildlife Areas. Master Gardeners, Master Naturalists, and members of the public are invited to assist with litter clean-up events. Members of the public will need to fill out an IDNR volunteer waiver on site. Kim Rohling will coordinate small teams of volunteers to collect litter from 9:00-11:00AM, in various locations in southern Illinois.

Volunteers will be required to sanitize their hands, follow social distancing guidelines, and wear a face mask for the duration of the event. To be prepared, volunteers should wear sturdy shoes, bring their own work gloves, and a face mask. Trash buckets and trash grabbers will be assigned to volunteers to use for the morning. All equipment will be disinfected before and after the event. This event is limited to 10 volunteers in order to follow recommended COVID-19 guidelines from Extension and IDNR. Register to save your spot now <https://go.illinois.edu/IDNRTrashBlast>.

Bring your own water to stay hydrated. We recommend you wear a wide-brimmed hat, lightweight pants, and a lightweight long-sleeved shirt to protect yourself from the sun, biting insects, or poison ivy/understory plants. Wear sturdy footwear and bring your own work gloves. Maps to the meeting location for each clean-up will be emailed to you the Monday before the event. Hope to see you there!



## Invasive Species Corner

Please look at the following resources for the latest in Invasive Species news.

<http://www.rtrcwma.org>  
<https://www.frstillinois.com>  
[www.sipba.org](http://www.sipba.org)

### Non-Native Invasive Species Update (NNIS) - Ray Beiri

This month we are featuring Japanese stiltgrass (*Microstegium vimineum*) yet again! Commonly known as stiltgrass, this aggressive invasive is an annual capable of producing 1000 seeds per plant, and is definitely worth another look. Around this time of year it will reach a height making it suitable for foliar herbicide treatment. Stiltgrass is currently about 4-8 inches in height; with 8 inches being recommended for foliar herbicide treatment. Once the plants have reached 8 inches, a 1-2% solution of Glyphosate mixed with blue dye can be applied. Grass specific herbicide such as Clethodim can also be used. Check out the mixing guide at [rtrcwma.org](http://rtrcwma.org) for resources on mixing. Mechanical removal by hand-pulling can also be effective for small infestation; pull carefully to ensure that you remove the entire plant with its root system.



Current phenology of Japanese stiltgrass (*Microstegium vimineum*)

Wintercreeper (*Euonymus fortunei*) has also reached a suitable growth stage for foliar herbicide treatment. Winter creeper is a perennial climbing and creeping vine that spreads vegetatively by rooting down from the stems both horizontally and vertically. They drop seed from the height of the trees they climb or spread by birds that feast on their fruits. A common look-alike is the non-native periwinkle (*Vinca minor*). This plant is often planted ornamentally for ground cover, but also spreads aggressively. Wintercreeper can be differentiated by its' serrated leaf margins. Periwinkle has a smooth, non-serrated leaf margin and does not climb. Check out the Cooperative Weed Management Area website at [rtrcwma.org](http://rtrcwma.org) for an easy guide to treatment of this invasive plant.



Ground vines of Wintercreeper (*Euonymus fortunei*)

If you want to learn how to better combat these and other non-native invasive plants, join us for the second part of a free training and herbicide giveaway on May 29<sup>th</sup> from, 9am to 11am. The River to River CWMA and the Forest Restoration Support Team will jointly host the event on Zoom, covering 10 more NNIS species as well as tools and tactics for summer treatment. No pre-requisites to attend. Email [volunteerfrst@gmail.com](mailto:volunteerfrst@gmail.com) to RSVP and

### University of Illinois Extension Forestry

Here is the link to Chris Evans' talk on Identification and Management of Herbaceous Invasive Plants: <https://youtu.be/TPRVGlmsR5g>



INPS SOUTHERN CHAPTER  
P.O. Box 271  
Carbondale, IL 62903-0271

[southernillinoisplants@gmail.com](mailto:southernillinoisplants@gmail.com)  
[www.ill-inps.org](http://www.ill-inps.org)



*Dodecatheon frenchii* –  
French's Shooting Star

### Board Members

President: Chris Evans  
VP: Jean Sellar  
Secretary: Erin Garrett  
Treasurer: Nancy Garwood  
At-large: Nick Seaton  
At-large: Kurt Neubig  
At-large: Jen Harris  
At-large: Rhonda Rothrock  
Newsletter: Jennifer Behnken

Know someone who would like to receive our newsletter? Please have them send their email address to [southernillinoisplants@gmail.com](mailto:southernillinoisplants@gmail.com) to be added to our distribution list!



**Join us!**

- ☐ New Member    ☐ Address Change only  
☐ Renewal    ☐ Additional Donation

Name \_\_\_\_\_  
Street \_\_\_\_\_  
City \_\_\_\_\_ State \_\_\_\_\_ Zip \_\_\_\_\_  
Phone Number \_\_\_\_\_ Membership Year \_\_\_\_\_  
Email \_\_\_\_\_

### Membership Categories

- ☐ Student.....\$15.00  
☐ Individual.....\$25.00  
☐ Family.....\$35.00  
☐ Institutional (nonvoting).....\$20.00  
☐ Supporting.....\$50.00  
☐ Patron.....\$100.00  
☐ Business.....\$125.00  
☐ Life.....\$500.00  
☐ *Iliamna* (life).....\$1,000.00  
☐ *Dodecatheon* (life).....\$2,000.00  
☐ *Erigenia* (life).....\$3,000.00

Please make checks payable to: Illinois Native Plant Society, Attn: Dr. Nancy Garwood  
Life Science II—Mailcode 6509 Southern Illinois University 1125 Lincoln Dr. Carbondale, IL 62901

**The Harbinger Newsletter** is sent electronically by email.

☐ Check here to receive the newsletter BY MAIL

**Erigenia**, our scientific journal, is now available digitally as well as in print.

Please indicate your preference for receiving the journal.

☐ Email only    ☐ Postal Mail only    ☐ Both

### Chapter Affiliation

- ☐ Central (Springfield)    ☐ Northeast (Chicago)  
☐ Forest Glen (Westville)    ☐ Quad Cities (Rock Island)  
☐ Grand Prairie (Bloomington)    ☐ Southern (Carbondale)  
☐ Kankakee Torrent    ☐ Other/Uncertain \_\_\_\_\_

### I would like to help with:

- ☐ Leadership & Organization (serving on board at State or Chapter level)  
☐ Leading Field Trips & Tours  
☐ Organizing Workshops &/or Seminars

- ☐ Giving Workshops &/or Seminars  
☐ Public Speaking  
☐ Fund Raising  
☐ Website Assistance/Management

- ☐ Public Media/Communications  
☐ Writing/Submitting articles  
☐ Photography  
☐ Other: \_\_\_\_\_

**My area of expertise:** \_\_\_\_\_