



Illinois Native Plant Society — Southern Chapter

The Shooting Star

April 2018

Newsletter

“Dedicated to the study, appreciation, and conservation of the native flora and natural communities in Illinois.”

Inside this issue:

<i>President's Message</i>	2
<i>Feature Plant of the Month</i>	2
<i>Events Calendar</i>	3
<i>INPS Annual Gathering Save the Date</i>	4
<i>Tribute, Jim Waycuilis</i>	4
<i>Summary of Past Events</i>	5
<i>Native Plant Sale</i>	6
<i>Local Events</i>	6-8
<i>Invasive Species Corner</i>	9
<i>Contact Us</i>	10

Illinois Indigenous Plant Symposium
Friday—Sunday, April 13th-15th
John A Logan College
Carterville, IL



ILLINOIS INDIGENOUS PLANT SYMPOSIUM

Shawnee Natural Areas:

HOTSPOTS OF BIODIVERSITY

April 13-15, 2018
 John A. Logan College
 Carterville, Illinois

Keynote Speaker: Gerould Wilhelm

Guided Hikes
 Friday at Jackson Hollow-Shawnee National Forest
 Sunday at Trillium Trail-Giant City State Park

Native Plant Sale on Saturday

For more information visit: ill-inps.org/2018-illinois-indigenous-plants-symposium/







<https://ill-inps.org/2018-illinois-indigenous-plants-symposium/>



If you are receiving a black and white newsletter by postal mail, please help lower our costs by signing up for an electronic copy in color. Send your email address to southernillinoisplants@gmail.com to be added to our email distribution list. Also please “like” our page on facebook at www.facebook.com/southernillinoisplants.



Message from the Southern Chapter President

What an unusual spring we are having to say the least! As I write this message, only the earliest of spring blooming plants have flowered. Bloodroot, Dutchman's Breeches, and Spring Beauty have been seen for a couple weeks, but everything else seems to be holding tight. This week's temperatures are expected to warm up and it will be interesting to see if the spring flora catches up to speed or if plants will bloom 3-4 weeks later than last year as the year progresses.

We are anxiously awaiting our big yearly event this weekend, the Illinois Indigenous Plants Symposium. Registration closes April 10th so act quickly if you have not yet. There is an excellent lineup of speakers. You can view the booklet at <https://ill-inps.org/2018-illinois-indigenous-plants-symposium/>. A native plant sale hosted by Green Earth Inc. will occur in conjunction with the symposium. Entry to the sale is free of charge and the plants are being supplied by Southernwood Gardens. Also, be sure to check out our list of native plant sales in the state on page 7 and share with your friends and family.

**"Bloodroot,
Dutchman's Breeches,
and Spring Beauty
have been seen for a
couple weeks, but
everything else seems
to be holding tight."**

Our May event will be a tour of Pleasant Valley Hill Prairies, which is a limestone glade in Pope County. We will investigate the plants occurring at this high quality natural area. The site is fairly easy to hike to, and we will meet at the gas station in Eddyville prior to the hike. More details will be in the next newsletter.

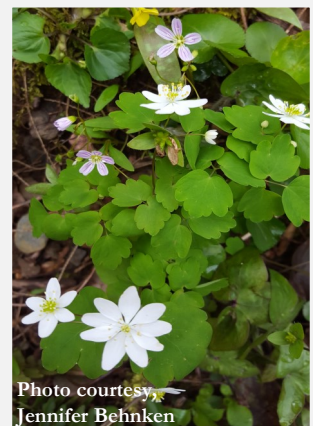
It is with a heavy heart that I must mention that Jim Waycuilis, our Conservation Leader of the Year, for 2017 passed away on March 8, 2018. Les Winkler published a tribute in The Southern (<https://bit.ly/2EAQsUA>). Jim was indeed a tireless advocate for the Cache, and an overall exemplary human. We will miss him, but his legacy lives on and I will always think of him when I visit that special place.

I hope to see you at one of our events soon. ~Christopher David Benda

Forestry agencies are testing an information-sharing program in southern Illinois. This system will allow southern Illinois conservation partners to map the spread of invasive species using their smart phones. To read more, visit <https://bit.ly/2H8VKfl>.

<h3><i>Feature Plant of the Month</i></h3>	<p>Rue Anemone, <i>Anemonella thalictroides</i></p>
--	--

Keep an eye out for these singular delicate beauties in deciduous woodlands, possibly the longest flowering species in early spring. It is referred to as 'windflower' due to the ease of this flower moving in the wind (also the Greek translation of *Anemonella*). This "true rue" is in the crowfoot family; it consists of 6-9 petaloid sepals arranged in a whorled pattern in sessile leaf bracts while flowers of False Rue Anemone (*Enemion biternatum*) have only 5 sepals (and found in moist bottomlands in colonies). The obovate/broadly oblong leaves are a whorl of trifoliate basal leaves with smooth margins, the stem color ranging from light green to reddish purple.



2018



Southern Chapter

P.O. Box 271, Carbondale IL 62901

southernillinoisplants@gmail.com

www.facebook.com/southernillinoisplants

Calendar of Events

Apr. 13-15	Various (keynote Dr. Gerould Wilhelm)	Indigenous Plant Symposium	John A. Logan
May 11	Chris Benda	Pleasant Valley Hill Prairies EA	Eddyville
June 2-3	Justin Thomas	Sedge Workshop	SIU, field sites
June 8-10	Various	INPS Annual Gathering	Kankakee Chapter
July 17	John E. Schwegman	Milkweeds of Illinois	CTH
Aug. 21	Erin Medvecz	Effects of Sericea Lespedeza on Native Plant Communities	CTH
Sept. 18	Chris Benda	Flora of the Illinois Coastal Plain	CTH
Oct. 14	Scratch Brewery	Hike and Brewery Tour	Ava, IL
Nov. 20	David Barfknecht	Community Changes in Southern Illinois Acid Seeps	CTH
Dec. TBD	INPS	Holiday Dinner and Award Ceremony	The Haven

CTH = Carbondale Township Hall, 217 E. Main St., Carbondale IL at 6:30 pm; TBD = To Be Determined
For more information visit <http://www.ill-inps.org/index.php/southern-chapter>

Dr. Douglas Tallamy will speak at the Astroth Auditorium at the Heartland Community College in Normal, IL on Tuesday, April 24 at 7 pm. His presentation is titled, "Creating Living Landscapes." This program is free and open to the public. For more information, e-mail ilprairiewo@gmail.com.

SAVE the DATE!! JUNE 8,9 & 10, 2018

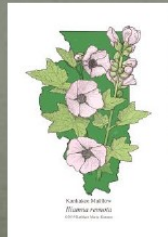
STATE ILLINOIS NATIVE PLANT SOCIETY ANNUAL GATHERING



Gerould Wilhelm,
Keynote Speaker
Sedge Identification
with Paul Marcum
Field Trips to Dunes, Fens,
Bogs, Moraines and a Day
at the Beach!
Chapter Event Sharing
Silent Auction
Fellowship and Fun

**Gather up the clan and head northeast
across the continental divide for an
exploration of the natural areas of the Lake
Michigan lake plain and moraines where
the water flows to the St. Lawrence Seaway,
away across the Valparaiso Moraine!**

Meeting Location: Governors State
University
Details Coming Soon on the INPS Web
Site and in the Harbinger!!



Kankakee Torrent Chapter
Host and Trail Boss
For 2018



Editor's Note:

It is with great sadness to note the passing of Jim Waycuilis. His thirty-seven years with the Illinois Department of Natural Resources and an affluent member of the Cache River Joint Venture Partnership for over twenty years brought forth progressive changes instrumental to the success and continuation of restoration efforts in the Cache River wetlands. He often emphasized that "the Cache is a really special place," inspiring passion and impacting the lives of all who knew him (including this former AmeriCorps member). His success developed into the Cache River Natural Area becoming the largest natural area in the state and partnership efforts pioneered the development and construction of the Henry Barkhausen Wetlands Center. His loss is deeply felt, but the true nature of his vision shall continue with his colleagues and lives he influenced. Thank you Jim.



Photo courtesy, Les Winkler



Summary of Past Events



March Program, Tracing the Phenology and Breeding System of the Venus' Looking Glass, by Dr. Jenn Weber

We had a wonderful program in March and many of our members were able to join us. Dr. Jenn Weber of Southeast Missouri State University presented her research on the native plant *Triodanis perfoliata*, commonly known as Venus' Looking Glass.

Triodanis is a genus made up of about 8 species, all of which are annual plants. These plants produce two kinds of flowers. Chasmogamous flowers are the showy purple flowers that attract pollinators and result in outcrossing, which maintains genetic diversity. These flowers can also self-fertilize, if not pollinated. The other flowers produced by *Triodanis*, cleistogamous flowers, are reduced, closed flowers without showy petals that self-fertilize. Dr. Weber's research focuses on investigating the question of why these plants produce both types of flowers.

One her main research questions is if inbreeding depression is a cost to self-fertilization. This would help explain the presence of chasmogamous flowers, which offer an opportunity to increase genetic diversity. After conducting greenhouse experiments, Dr. Weber found the opposite of her expectations: inbreeding depression was not a cost to self-fertilization. Further experimentation comparing the offspring of cleistogamous (selfing) flowers and chasmogamous flowers that were not pollinated and subsequently self-fertilized found that the offspring of selfing flowers had higher fitness than offspring from self-fertilized chasmogamous flowers. So, self-fertilizing flowers did not exhibit inbreeding depression, and when both types of flowers self-fertilize, the offspring of the selfing flowers had fitter offspring.

Another question being researched is if a plant's relative allocation to producing chasmogamous or cleistogamous flowers is context dependent. Essentially, Dr. Weber questioned the idea that an increased number of pollinators would result in an increase in the number of chasmogamous flowers produced. Her research found the opposite result! Why would this be? Perhaps resource limitation limits the subsequent production of chasmogamous flowers. So, the plant takes the approach of making a few expensive showy purple chasmogamous flowers, and then lots of "cheap" cleistogamous flowers.

Other research being conducted in her lab is exploring the variation in *Triodanis* across its range in the U.S. This plant is very wide ranging, occurring in high quality areas across the country. Although as Jenn said, her plant usually was growing right in the parking lot or trail! She is using this data, as well as over 1,000 herbarium specimens, to explore if flowering time in this plant has advanced with climate change. So far, the answer is yes! Further details on this research are forthcoming, as well in which parts its range the flower time is advancing faster than others.

Thanks to our speaker for sharing her knowledge! For more information about Dr. Weber's research, visit her lab's website: <https://www.jenniferweber.org/>



"Chasmogamous flowers are the showy purple flowers that attract pollinators and result in outcrossing, which maintains genetic diversity. These flowers can also self-fertilize, if pollinated."

Local Events

Plants are supplied by local growers at Southernwood Gardens in Alto Pass



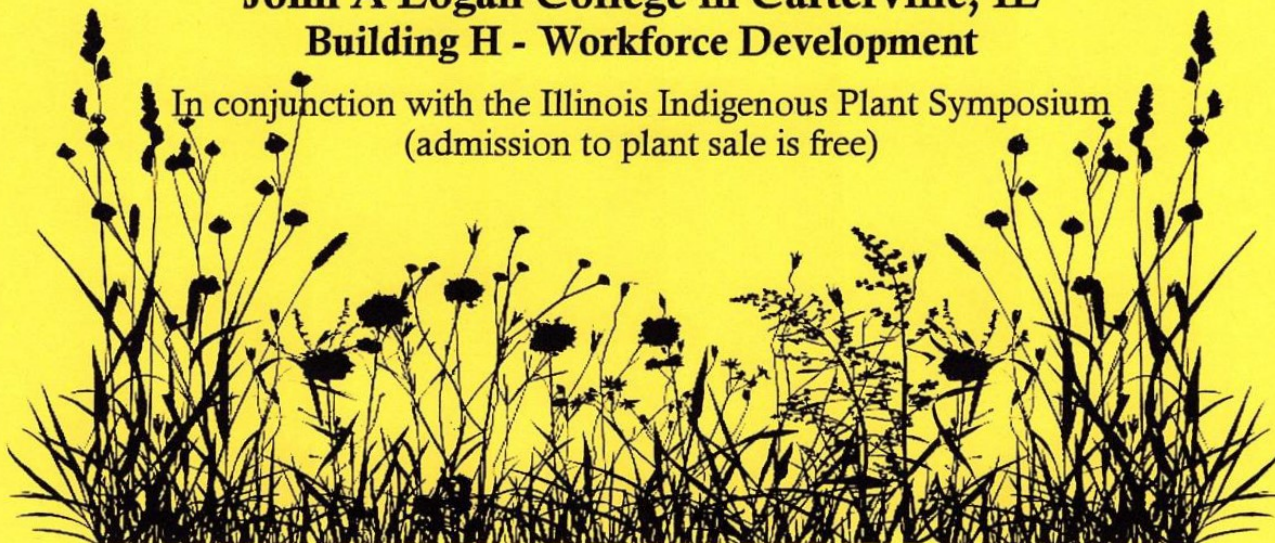
Native Plant Sale

high quality plants from Southernwood Gardens
native grasses, wildflowers, ferns, vines, shrubs

April 14th, 2018, 8:00 am to 2:00 pm

**John A Logan College in Carterville, IL
Building H - Workforce Development**

In conjunction with the Illinois Indigenous Plant Symposium
(admission to plant sale is free)



Sierra Club Native Plant Sale

Saturday, May 5th, 10 am—2 pm

Town Square Pavilion in Carbondale

(just west of the railroad tracks, corner of Jackson St. & Illinois Ave.)

Many varieties from Southernwood Gardens in Alto Pass and Missouri Wildflowers will be here. Pre-orders are welcome to save your favorites and bypass shipping fees. See mowildflowers.net or call Southernwood at 618-833-2769 and mention delivery at the Sierra Club Native Plant Sale on May 5th. For more information, contact Barb McKasson at 618-529-4824 or e-mail at babitaji@aol.com.



**SIERRA
CLUB**

ILLINOIS CHAPTER

Wildflower Walk at Green Earth Preserve

Sunday, April 22nd at 2 pm

Entrance near intersection of Freeman St. and Emerald St. in Carbondale, IL

For more information, call Ruth Kelly at 618-684-2196 or e-mail at rth_kelley@yahoo.com.



Local Events

Hummingbirds have arrived in southern Illinois! Check out their progress at <http://www.hummingbirds.net/map.html>.

March for Science! This program advocates for a role of science in evidence-based policy and public life. National march will be Saturday, April 14th. For more information, visit <https://www.marchforscience.com/>.

Giant City State Park

Spring Wildflower Walks

Saturdays, April 14th & 19th, 10 am– 12 pm

Trillium Trail is Giant City is one of the best spring wildflower trails in southern Illinois. Join the Natural Resource Coordinator as we meander through the spring woods and take a closer look at these petite beauties. This is a moderately difficult two-mile trail with some steep stair climbing. Please register by calling 618-457-4836.

The Mysterious Morel Mushroom

Saturday, April 14th, 1 pm– 4 pm

The morel is a tricky fungus! There seems to be no rhyme or reason to these mushrooms. Park volunteer, photograph, and nature enthusiast, Gretchen Steele, has some great tips to help you find the (sometimes hard to locate) morel. After a brief presentation, we will head out to the field for a small hike. While we may not find any mushrooms, participants will have a chance to learn about what makes good mushroom habitat. Please register by calling 618-457-4836.



Cache River Wetlands Center

Serendipity Nature Walk

Saturday, April 14th, 9 am—12 pm

Take a guided hike along Tupelo Trail, searching for native plants, birds, and other wildlife of the wood and swamp habitats. This trail has moderately difficult terrain. Meet at the Marshall Bridge Access at the end of Sunflower Lane in Belknap, IL. For questions, call the Wetlands Center at 618-657-2064.

In Search of Big Trees

Saturday, April 28th, 2 pm

This presentation by Chris Evans, Extension Forester for the University of Illinois Extension, will discuss the Illinois Big Tree Register, the types of metrics used to measure big trees, highlight some of the biggest trees in Illinois, and encourage everyone to get involved by nominating big trees! For questions, call the Wetlands Center



Crab Orchard National Wildlife Refuge

Wildflower Walk

Saturday, April 21st 8 am & 1 pm

Join a knowledgeable guide at the Rocky Bluff trailhead for a hike and an in-depth program about spring wildflowers. Meet at the Rocky Bluff trailhead off Tacoma Lake Road. Reservations are recommended. To register, call 618-997-3344.



Local Events

Let the Sun Shine In

Using natural areas as hotspots of local biological diversity to manage a mosaic of forest communities



April 12-13, 2018 — Southern Illinois

Co-Sponsored by Natural Areas Association, Shawnee RC&D, University of Illinois – Extension, Illinois Department of Natural Resources, Shawnee National Forest

Join our emerging conversation about how to restore a mosaic of forest communities at a landscape scale. Bring your expertise about natural areas management and hear from collaborators in Southern Illinois about how they're managing large, contiguous landscapes for biological diversity and oak recovery. You will leave with an in-depth knowledge of Let the Sun Shine In, while also understanding how natural areas play an important role in this landscape-scale effort.

Register at <https://web.extension.illinois.edu/registration/?RegistrationID=18285>

Bill proposing farm bureau members be added to the Endangered Species Protection Act

<https://bit.ly/2IHAUAX> (Consider filling out a witness slip for this legislation)

Synopsis: Amends the Illinois Endangered Species Protection Act. Provides that a permit for incidental taking under the Act shall not be required if a federal conservation agreement, including but not limited to, a candidate conservation agreement, habit conservation plan, or safe harbor agreement, is in effect and approved by the United States Fish and Wildlife Service under the federal Endangered Species Act of 1973. Provides that in making Endangered Species Protection Board appointments of naturalists, the Governor shall give consideration to recommendations of conservation groups.

Botany Bill

On February 14, 2017, Representative Quigley (D-IL) introduced House Resolution 1054, with co-sponsor Ros-Lehtinen (R-FL). This legislation is intended to promote botanical research and botanical sciences capacity (including botanical education), generate demand for native plant materials, and authorize related federal activities. This bipartisan legislation allows federal agencies to act with the expertise required to preserve unique American landscapes and emphasizes the importance of protecting native plants and plant ecosystems.

H.R. 1054, "The Botanical Sciences and Native Plant Materials Research, Restoration, and Promotion Act", promotes and supports native plant research and use.

For more information, visit <https://botanybill.weebly.com/>.



Lichens of Wisconsin

Several of these species also reside in Illinois. This booklet was written specifically for the non-scientist who wishes to learn more about these fascinating organisms. To access this publication, visit

<https://bit.ly/2GLHCsP>

Invasive Species Corner

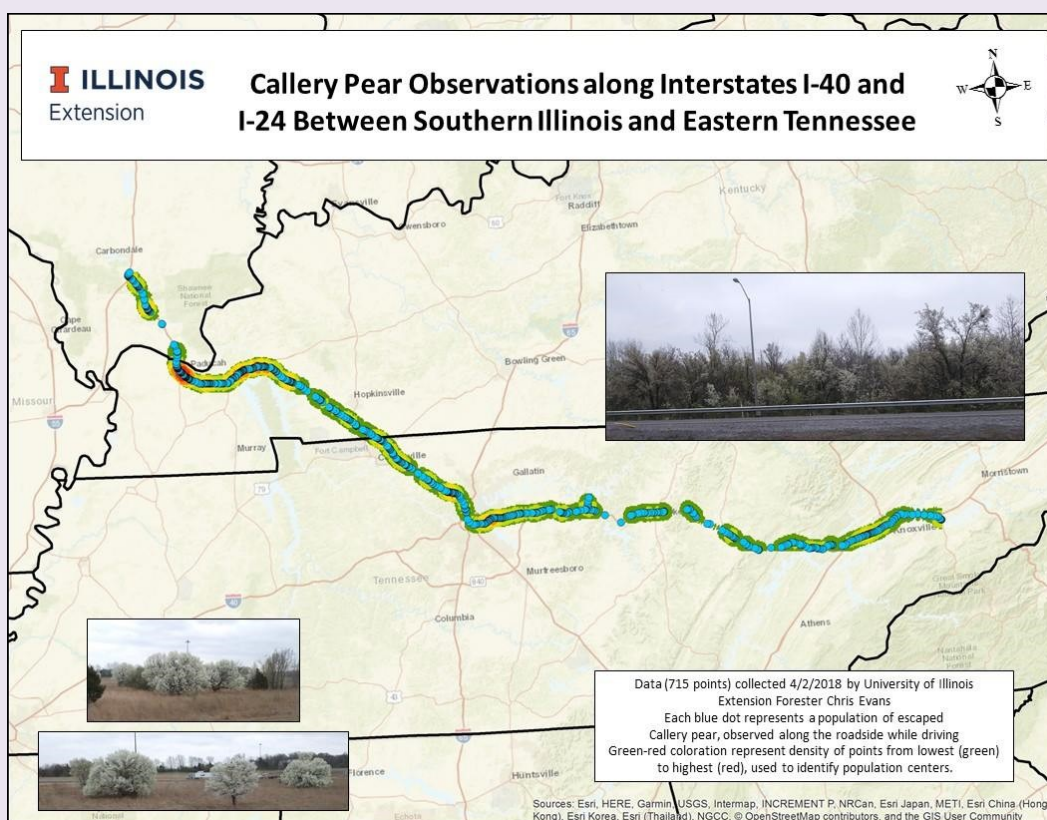
<http://www.rtrcwma.org>
<http://www.facebook.com/rtrcwma>

Please look at the following resources for the latest in Invasive Species news.



Photo courtesy, Dan Nickrent

As spring moves into full swing and our native species emerge, be also aware of the non-native invaders around the area. This is the cue to make the transition from treating woody invasive species into herbaceous ones, such as the biennial garlic mustard (*Alliaria petiolata*). Treatment options for this plant include both hand pulling or the application of non-selective glyphosate (2% solution), combined with broadleaf specific triclopyr (1.5% solution) after plants have bolted and flowered.



During a trip heading east, Chris Evans, University of Illinois Extension Forester, observed an alarming number of callery pear escapes during his journey. **715 points** noting one or more callery pear trees (usually several trees) were recorded on this excursion, bringing testament to the growing population and increasing notes of concern for controlling the spread of a species still popular in ornamental landscapes. All cultivars of ornamental pear, including Bradford pear, Cleveland Select, etc. contribute in the propagation of escaped specimens.

Forest Restoration Support Team

A Private Land Management Partnership

The Forest Restoration Support Team is excited to officially announce our new membership program. We are still proud partners of the Southern Illinois Prescribed Burn Association (SIPBA) but we will now have our own membership that is open to all private landowners in the southernmost 11 counties of Illinois. Please contact Nathan Speagle, FRST Coordinator at volunteerFRST@gmail.com or Nick Seaton, the new Coordinator of the River to River CWMA at rtrcwma@gmail.com if you have any questions, comments or concerns, and to receive a copy of FRST's brochure for full program details. Come join us!



INPS SOUTHERN CHAPTER
P.O. Box 271
Carbondale, IL 62903-0271

southernillinoisplants@gmail.com
www.ill-inps.org



Dodecatheon frenchii –
French's Shooting Star

Board Members

President: Chris Benda
VP: Chris Evans
Secretary: Erin Medvecz
Treasurer: Sonja Lallemand
At-large: Nancy Garwood
At-large: Jean Sellar
At-large: Jody Shimp
At-large: Marisa Szubryt
Newsletter: Jennifer Behnken

Know someone who would like to receive our newsletter? Please have them send their email address to southernillinoisplants@gmail.com to be added to our distribution list!



Join us!

- ☐ New Member ☐ Address Change only
☐ Renewal ☐ Additional Donation

Name _____		
Street _____		
City _____	State _____	Zip _____
Phone Number _____	Membership Year _____	
Email _____		

Membership Categories

- ☐ Student.....\$15.00
☐ Individual.....\$25.00
☐ Family.....\$35.00
☐ Institutional (nonvoting).....\$20.00
☐ Supporting.....\$50.00
☐ Patron.....\$100.00
☐ Business.....\$125.00
☐ Life.....\$500.00
☐ *Iliamna* (life).....\$1,000.00
☐ *Dodecatheon* (life).....\$2,000.00
☐ *Erigenia* (life).....\$3,000.00

PLEASE MAKE CHECKS PAYABLE TO:

Illinois Native Plant Society, P.O. Box 271, Carbondale, IL 62903

The Harbinger Newsletter is sent electronically by email.

☐ Check here to receive the newsletter BY MAIL

Erigenia, our scientific journal, is now available digitally as well as in print.

Please indicate your preference for receiving the journal.

☐ Email only ☐ Postal Mail only ☐ Both

Chapter Affiliation

- | | |
|--|--|
| <input type="checkbox"/> Central (Springfield) | <input type="checkbox"/> Northeast (Chicago) |
| <input type="checkbox"/> Forest Glen (Westville) | <input type="checkbox"/> Quad Cities (Rock Island) |
| <input type="checkbox"/> Grand Prairie (Bloomington) | <input type="checkbox"/> Southern (Carbondale) |
| <input type="checkbox"/> Irene Cull (Peoria) | <input type="checkbox"/> Other/Uncertain _____ |
| <input type="checkbox"/> Kankakee Torrent | |

I would like to help with:

- | | | |
|---|---|--|
| <input type="checkbox"/> Leadership & Organization (serving on board at State or Chapter level) | <input type="checkbox"/> Giving Workshops &/or Seminars | <input type="checkbox"/> Public Media/Communications |
| <input type="checkbox"/> Leading Field Trips & Tours | <input type="checkbox"/> Public Speaking | <input type="checkbox"/> Writing/Submitting articles |
| <input type="checkbox"/> Organizing Workshops &/or Seminars | <input type="checkbox"/> Fund Raising | <input type="checkbox"/> Photography |
| | <input type="checkbox"/> Website Assistance/Managment | <input type="checkbox"/> Other: _____ |