

Illinois Native Plant Society Northeast Chapter

EDITOR: LINDA M. MACKECHNIE

AUGUST 2015

A few words from the president

Hi Northeast Chapter!

With September already upon us, I hope you are enjoying the tail-end of summer. We had a couple nice field trips in August, one to Montrose Beach Dunes in Chicago and then one to Ball Horticultural Company in West Chicago. I know we had a great time visiting Montrose and it sounded like the Ball trip went well, too! Please read on to see our field trip recap write-ups and the beautiful photos that were taken on the walks.

I hope you can join us on an upcoming field trip this fall. We have a couple destinations in mind in McHenry County and DuPage County and are in the process of finalizing those trip details. Please keep your eyes peeled for email notifications and FaceBook posts and we'll get that info out to you as soon as possible.

Have a great September and hopefully we'll see you out there soon!

- Andy

If you received this as a complimentary copy, you may wish to join the Illinois Native Plant Society. Send your name, address, and phone number with a check made out to INPS for

- \$13 *Student*
- \$20 *Individual*
- \$20 *Institutional (nonvoting)*
- \$30 *Family*
- \$30 *Supporting*
- \$55 *Patron*
- \$300 *Life*

Mail to: INPS, Forest Glen Preserve, 20301 East 900 North Rd, Westville, IL 61883 or visit www.ill-inps.org. Please indicate that your chapter is Northeast.

Join today! Like us on [FaceBook](#)!

Spanish speakers - visit our Spanish FaceBook page

Native Plant Excursions

Visit our [FaceBook](#) page for more info!

RECENT

NE-INPS Field Trip to Montrose Beach Dunes

Andy Olnas (photos by Danny Lopez)

On Saturday, August 1st, around 15 folks got together and hiked through the Montrose Beach Dunes natural area in Chicago. We had full sun and temperatures in the 80's and it was a beautiful day to be hiking on a beach. The beautiful weather was only overshadowed by the beauty we got to see in the form of the interesting plants that Montrose has to offer.



Pink Turtlehead (*Chelone oblique*) – Photo LMM

Illinois Native Plant Society Northeast Chapter

AUGUST 2015

PAGE 2



Spotted Bee Balm (*Monarda punctata*)

We hiked along the designated trails and saw a number of blooming plants that included Kalm's lobelia, (*Lobelia kalmii*), Kalm's St. John's wort (*Hypericum kalmii*), obedient plant (*Physostegia virginiana*) and countless others. The three species I just listed are only a small subset of plants that we saw on the trip, and this brief snapshot doesn't begin to do justice to this cool site. Montrose is home to over 20 state listed plant species and we got to see several of those on our hike. In next month's newsletter I'll include the full list of plant species we saw and even that will fall shy of fully describing how cool Montrose Beach Dunes is.

I'd like to thank the Montrose Beach stewardship volunteers and the Chicago Park District for hosting our group and for doing such a great job managing this unique natural area. I look forward to returning sometime soon and I recommend this site as a premiere destination for botanizing or just having a cool beach walk. It is very much worth the trip into the city.

Andy



Obedient Plant (*Physostegia virginiana*)

Illinois Native Plant Society Northeast Chapter

AUGUST 2015

PAGE 3

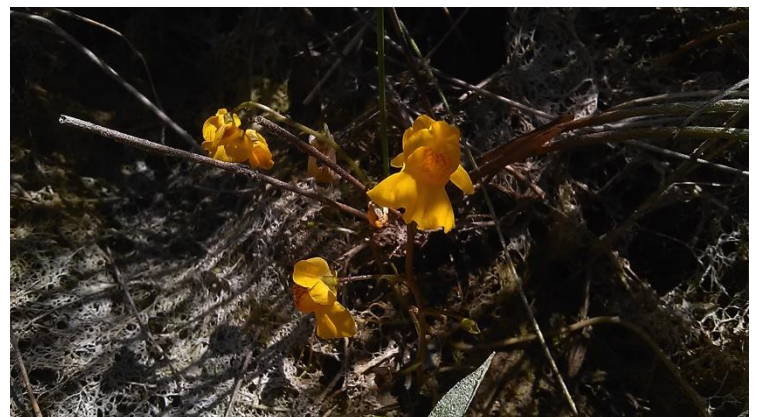


Kalm's Lobelia (*Lobelia kalmii*)



Common Rose Pink (*Sabatia angularis*)

Star of the trip – the Common Bladderwort (*Utricularia macrorhiza*)! This plant is known to the Chicago area but has not been seen at this particular site before, despite lots of recent plant surveys. It is likely a tribute to the hard work of volunteers and restoration efforts. *Utricularia* are carnivorous plants, feeding on aquatic invertebrates that it traps in the submerged bladders.



Common Bladderwort – Habit.

Illinois Native Plant Society Northeast Chapter

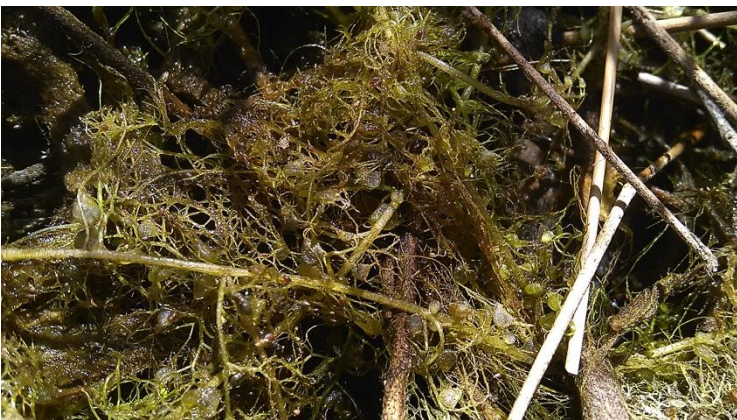
AUGUST 2015

PAGE 4



Common Bladderwort – Flower close-up.

They typically grow in nutrient poor habitats. The finding has received lots of local attention, with a nice write-up by WTTW ([link here](#)) based on an interview with one of our trip attendees, Greg Spyreas (INHS).



Common Bladderwort – Leaves and stem.

NE-INPS Field Trip to Restoration Areas and the Gardens at Ball Horticultural Co.

Thanks to the hardy group who joined me on a very warm Sunday (August 16) to visit the natural areas and native plantings at the gardens. Natural areas were planted, are being monitored and maintained by Pizzo Associates. After a brief discussion of the history of the area and the plant products offered by Ball, we first visited the created wetland. Over 100 species of plants (seed and plantings) were used in the creation/restoration of this area. The soils are rich, and the plants correspondingly tall. There was an abundance of grass, sedge and composite species, plus a large number of insects using the area.



Prairie Dock (*Silphium terebinthinaceum*) reaching over 12' tall!



Brown-Eyed Susan (*Rudbeckia triloba*)?

Next stop was along the building perimeter to observe the planted native landscaping. We quickly passed through the Ball Horticultural gardens to reach the wet wooded area where we picked up a number of additional species along the creek and in the moist uplands including White Turtlehead and Obedient Plant. Special thanks to the attendees for knowledge of the species (and

Illinois Native Plant Society Northeast Chapter

AUGUST 2015

PAGE 5

their patience with my lack thereof), and to Danny Lopez for identifying a number of the plants from my photos.

- Linda M.



Obedient Plant
(*Physostegia virginiana*)



Flowering Spurge
(*Euphorbia corollata*)

Partial Species List

Wetland and wet prairie: Arrowhead (*Sagittaria* sp.), Big Bluestem Grass (*Andropogon gerardii*), Blue Flag Iris (*Iris virginica shrevei*), Brown-Eyed Susan (*Rudbeckia triloba*)?, Common Cattail (*Typha latifolia*), Cup Plant (*Silphium perfoliatum*), Dark Green Bulrush (*Scirpus atrovirens*), Elderberry (*Sambucus nigra*), Flowering Spurge (*Euphorbia corollata*), Goldenrods (*Solidago* spp.), Great Blue Lobelia (*Lobelia siphilitica*), Indian Grass (*Sorghastrum nutans*), Joe Pye Weed (*Eutrochium fistulosum*), Marsh Blazingstar (*Latris spicata*), Swamp Milkweed (*Asclepias incarnata*), New England Aster (*Symphyotrichum novae-angliae*), Philadelphia Fleabane (*Erigeron philadelphicus*), Prairie Dock (*Silphium terebinthinaceum*), Purple Coneflower (*Echinacea purpurea*), Rosin Weed (*Silphium integrifolium*), *Scirpus esculentus*, Schoenoplectus sp., Swamp Rose Mallow (*Hibiscus moscheutos*), Tall boneset (*Eupatorium altissimum*), Wild Bergamot (*Monarda fistulosa*), Woodland Sunflower (*Helianthus divaricatus*), Yellow coneflower (*Ratibida pinnata*).



Native landscaping



Great Blue Lobelia (*Lobelia siphilitica*)

Woodland and stream additions: American Basswood (*Tilia americana*), Cardinal Flower (*Lobelia cardinalis*), Joe Pye Weed (*Eutrochium fistulosum*), Obedient Plant (*Physostegia virginiana*), Orange Jewelweed (*Impatiens capensis*), Osage Orange (*Maclura pomifera*), White Turtlehead (*Chelone glabra linifolia*).

UPCOMING

Cook County

Mushroom Show

Chicago Botanic Garden

Saturday Sept. 6, 10:00 am – 4:00 pm

Special exhibit with over 50 varieties of local mushrooms. Members of the Illinois Mycological Association will be onsite to answer questions. For more information, follow [this link](#).

Illinois Native Plant Society Northeast Chapter

AUGUST 2015

PAGE 6

Forest Preserves of Cook County – 100 Years 100 Events

Sept. 20–27, various locations.

A week full of nature! Choose from hikes, activities, birding, and more. Check out [100 years 100 events](#) for more information.

DuPage County

St. James Farm Nature Walks

Saturday (Sept. 5), 10:00–11:00 a.m.

View blooming plants on a relaxing 1-mile walk. Ages 5 and up; under 13 with an adult. \$2 per person ages 5 and up; under 5 free. Register by Thursday prior at (630) 580-7025.

Danada Nature Walks

Saturday (Sept. 12), 10:00–11:30 a.m.

Free. Register by Sept. 4 at (630) 933-7681.

Lake County

Guided Hikes – different preserve each weekend.

Many are free and most do not require registration. Visit [Lake County Forest Preserves](#) for more information.

McHenry County

Fascinating Fall Fungus

Marengo Ridge, Shelter 1, Marengo

Sunday, Sept. 20, 2:00–3:30 p.m.

District staff and local members of the Wisconsin Mycological Society will help participants seek out and learn about local fungi. \$2 fee for non-residents. See the [McHenry County District](#) web page for more information.

Other Regional Plant Events

UPCOMING

Chicago Area

The 8th International Oak Society Conference

Oct. 18–21, The Morton Arboretum.

The conference features lectures on a wide range of topics in oak systematics, biodiversity, conservation,

ethnobotany, and horticulture, as well as workshops and field trips within the Arboretum's collections. For more information, please check out [this web page](#).

Central Illinois

Plant Sale and Fossil Giveaway

Friday, September 4 & Saturday, September 5, 9:00 a.m. – 2 p.m. 1411 Winding Lane, Champaign (Home of Steven Hill of the INHS).

Many of you already know Steven as a great field botanist and plant propagator. He is sharing the wealth with a diversity of native plants (plus house plants) and fossils. Cash & check only. Email Steven for a list of plants available (<mailto:srhill50@msn.com>).

You may also want to check out [The Outside Calendar](#).

Volunteer Opportunities

DuPage County

Blackwell Native Plant Nursery

Wednesday (Sept. 2), Monday (Sept. 14), Friday (Sept. 18), Saturday (Sept. 26), 8:00–11:00 a.m.

Help weed, water, or collect and clean seed. Ages 12 and up; under 16 with an adult. Register at (630) 933-7681 at least five business days prior (10 days for groups of five or more).

Lake County

Restoration Workday in the Native Plant Nursery Weekends

FALL: Brush clearing, seed collection, tree and shrub planting. **Restoration workday coordinator:**

[Tom Smith](#), Land Management Technician
Desk: 847-968-3329, cell: 847-276-5379.

[The Habitat Project](#) and [Habitat 2030](#) [ongoing]

Illinois Native Plant Society Northeast Chapter

AUGUST 2015

PAGE 7

Conservation/Land Management

Conservation Ecologist Position at the Chicago Botanic Garden, Glencoe.

Application Review begins September 15.

"The Chicago Botanic Garden seeks a conservation ecologist with research strengths in landscape ecology, community ecology, plant/animal interactions, or seed ecology for its Plant Science and Conservation Division..... The ideal candidate will have a Ph.D. and strong quantitative skills." For more information visit the Garden's [Job Posting](#).

America's Grasslands Conference (3rd biennial) September 29 – October 1, 2015, Fort Collins, Colorado.

Registration is now open for the conference, and early registration ends September 10. The theme is "Partnerships for Grassland Conservation". If you would like more information on the program or the 60+ speakers, please follow [this link](#).

Natural Areas Conference 2015 November 3–5, 2015, Little Rock, Arkansas.

Registration is now open for the conference, and early registration ends September 12. The theme is "Conservation Through Collaboration." The conference includes a number of plenary and special sessions, field trips and workshops. For more information, please follow [this link](#).

Resources



Special notice from our member Linda Curtis! If you are interested in purchasing copies of both Woodland Carex and Bog-Fen Carex, she is offering a 10% discount. For more information, please visit her [website](#).

Events At A Glance:

Sept. 4&5	Plant Sale and Fossil Giveaway
Sept. 5	St. James Farm Nature Walk=
Sept. 6	Mushroom Show - CBG
Sept. 12	Danada Nature Walk
Sept. 20	Fascinating Fall Fungus
Sept. 20-27	Forest Preserves of Cook Co. 100 years 100 Events
Sept. 29–Oct. 1	America's Grasslands Conference
Oct. 18-21	Oak Society Conference
Weekends	Lake County Guided Hikes
Nov. 3–5	Natural Areas Conference

Please check on our NE-INPS or Facebook pages for late additions to the calendar of events.

Got some great ideas for places to go or plants to see?
Want to hear talks on specific topics?

Send us an email message: northeast-inps@gmail.com or
write me directly at lindamprince@gmail.com



Yellow Coneflower (*Ratibida pinnata*) – photo LMM